

ALTM-NAV FLIGHT MANAGEMENT SYSTEM

SPECIFICATIONS

Optech offers a complete flight management system that reduces flight time and operating costs by monitoring swath coverage inflight and in real time.

ALTM-NAV is a complete mission planning, project costing and quality control package that is an ideal complement to the Optech ALTM. Running on the ALTM system computer and included pilot display, the ALTM-NAV enables users to optimize data collection and realize cost savings with more efficient flight operations.

ALTM-NAV allows you to:

- Reduce operating costs
- Plan more effectively and efficiently
- Monitor swath coverage in real-time
- Create flight lines automatically from survey parameters
- Develop survey plan and estimate flight times & costs
- Import background maps and photos for visual reference to survey area
- Import or manually delineate survey boundaries
- Monitor real-time graphical alerts: GPS-PDOP, POS, Laser
- Trim flight line overlap without increasing risk
- Fill “data gaps” before landing
- Generate flight logs, including in-flight system changes, messages, alerts and area coverage
- Maintain flexibility as requirements change

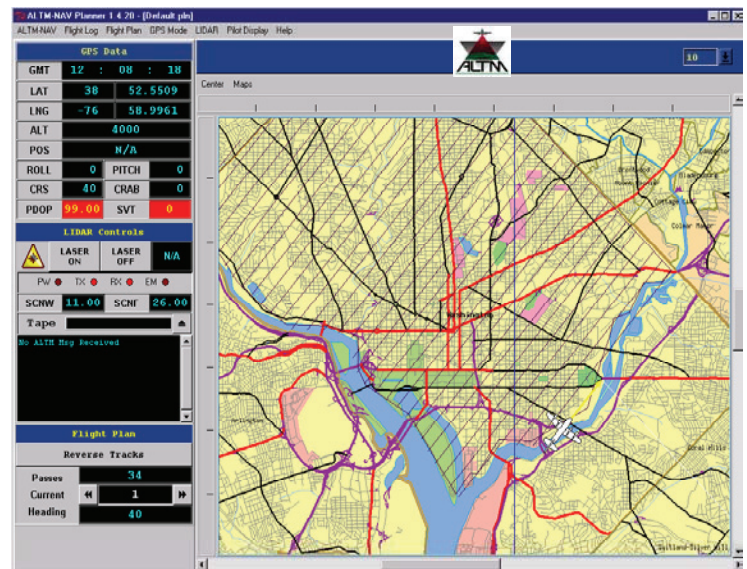
With ALTM-NAV you get:

- A simple, graphical mission planning toolkit
- Real-time navigation display with moving map
- Real-time swath coverage display
- Unified graphical interface for ALTM controls
- Coordinate converter for Lat/Long, WGS84 and UTM
- Separate survey planners for wide areas and corridors
- Customizable displays

ALTM-NAV is included with all new ALTM systems or it can be purchased separately for existing ALTM systems

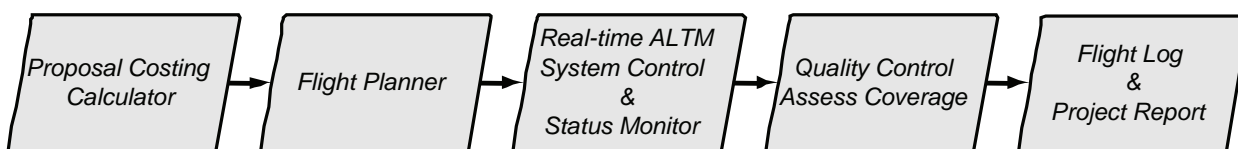


Typical system, showing included pilot display with Course Deviation Indicator



ALTM-NAV Main Screen

Streamline workflow with the ALTM-NAV Flight Management System



Terrestrial Survey

300 Interchange Way • Vaughan, ON • Canada L4k 5Z8

Tel: [905] 660-0808 • Fax: [905] 660-0829 • Web: www.optech.ca