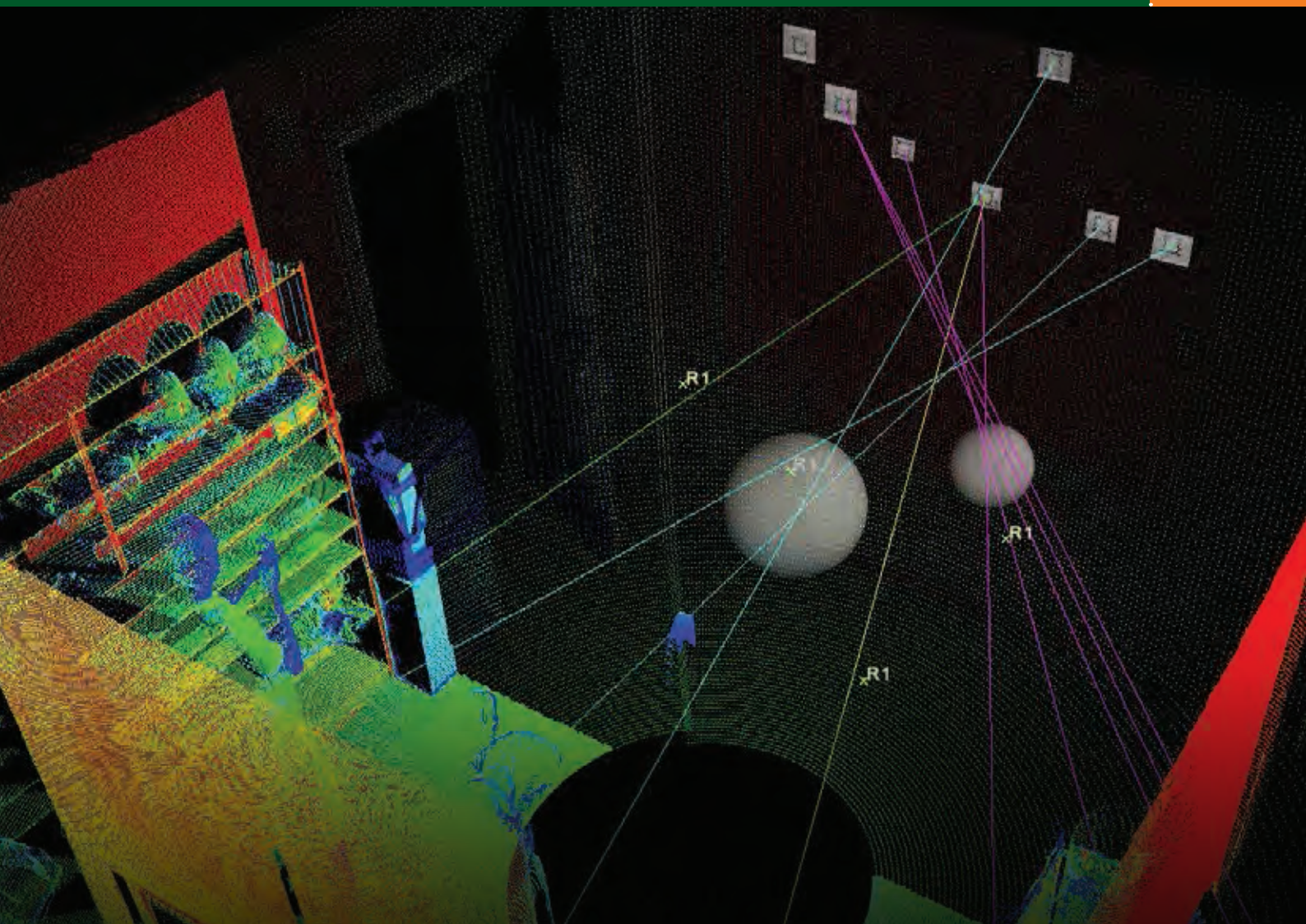


## BLOOD SPATTER TRAJECTORY

Render a high resolution image from a crime scene onto laser scan data to automatically determine the trajectory of blood droplets. Apply this tool to define the origin of the spatter.



### I-SITE FORENSIC BLOOD SPATTER TOOL

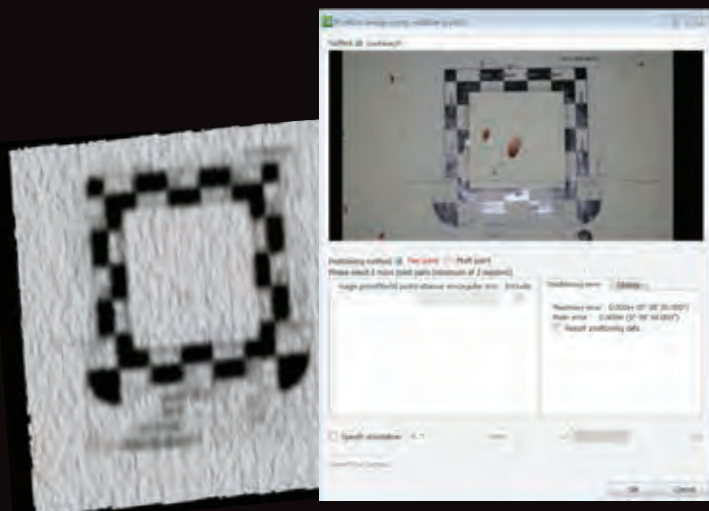
1. **Capture** important data before it is removed
2. **Process** identify key evidence
3. **Analyse** define the origin in 3D
4. **Present** true 3D viewing and reporting



**1** Identify blood droplets in the crime scene from the laser scan data.



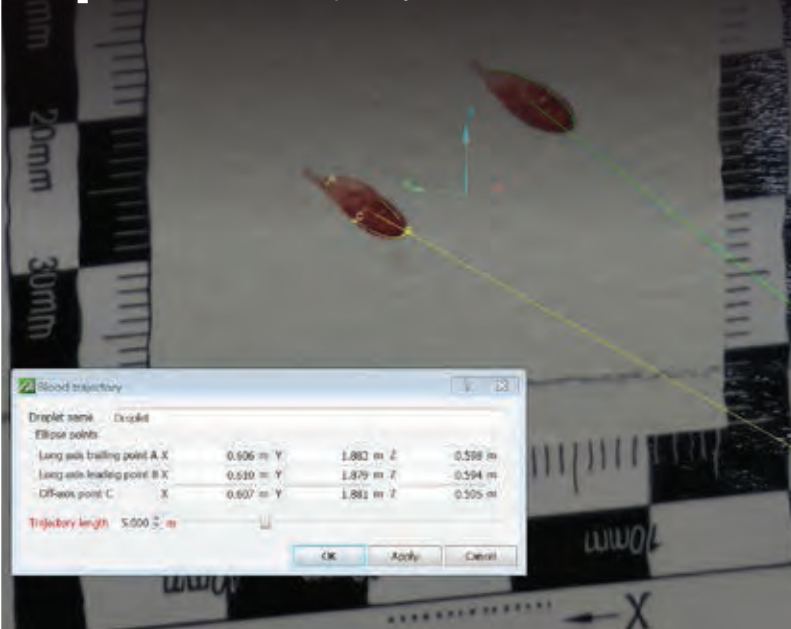
**2** Render high resolution images of the targets onto the laser scan.



**3** Use the rendered 3D photo to pick the ellipsoid for each droplet.



**4** The Blood Spatter tool automatically determines the trajectory.



**5** Present a 3D model of the scene with trajectory lines leading to origin of the blood spatter.

